



# SCOPE GT REEL USER MANUAL







Your new Nash product has a 12 month manufacturer warranty as standard. To extend this warranty to 24 months please visit the Nash website and register your new product here: **[www.nashtackle.com/register](http://www.nashtackle.com/register)**

**(FR)**

Votre nouveau produit Nash a une période de garantie de 12 mois d'origine. Pour étendre cette période de garantie à 24 mois, merci de visiter notre site internet, et enregistrer votre produit sur le lien suivant: **[www.nashtackle.com/register](http://www.nashtackle.com/register)**

**(CZ)**

Váš nový produkt Nash má standardní záruku od výrobce 12 měsíců. Chcete-li tuto záruku prodloužit na 24 měsíců, navštivte webové stránky společnosti Nash a zaregistrujte svůj nový produkt tady: **[www.nashtackle.com/register](http://www.nashtackle.com/register)**

**(IT)**

Il tuo nuovo prodotto Nash ha 12 mesi di garanzia da problemi di fabbricazione. Per estendere la garanzia a 24 mesi si prega di consultare il sito internet Nash e registrare il tuo nuovo prodotto qui: **[www.nashtackle.com/register](http://www.nashtackle.com/register)**

**(DE)**

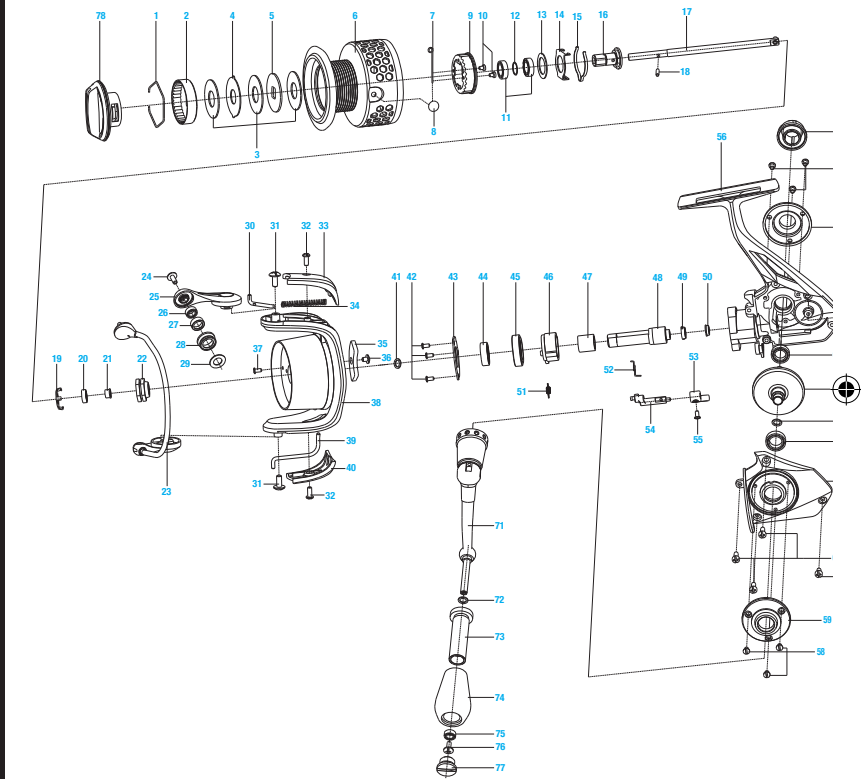
Ihr neues Nash-Produkt hat als Standard eine 12-monatige Herstellergarantie. Um diese Garantie auf 2 Jahre auszuweiten, besuchen Sie bitte die Nash Webseite und registrieren das Produkt hier: **[www.nashtackle.com/register](http://www.nashtackle.com/register)**

**(NL)**

Je nieuwe Nash product heeft standaard een fabrieksgarantie van 12 maanden. Indien je deze wil verlengen naar 24 maanden, bezoek dan de Nash website en registreer je nieuwe product hier: **[www.nashtackle.com/register](http://www.nashtackle.com/register)**

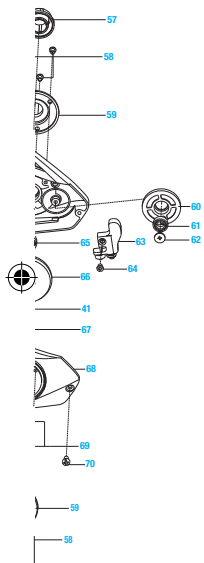
**(PL)**

Twój nowy produkt Nash jest objęty standardową, 12-miesięczną gwarancją producenta. Aby rozszerzyć gwarancję do 24 miesięcy, odwiedź naszą stronę internetową i zarejestruj nowy produkt: **[www.nashtackle.com/register](http://www.nashtackle.com/register)**





## SCOPE OPS REEL DIAGRAM

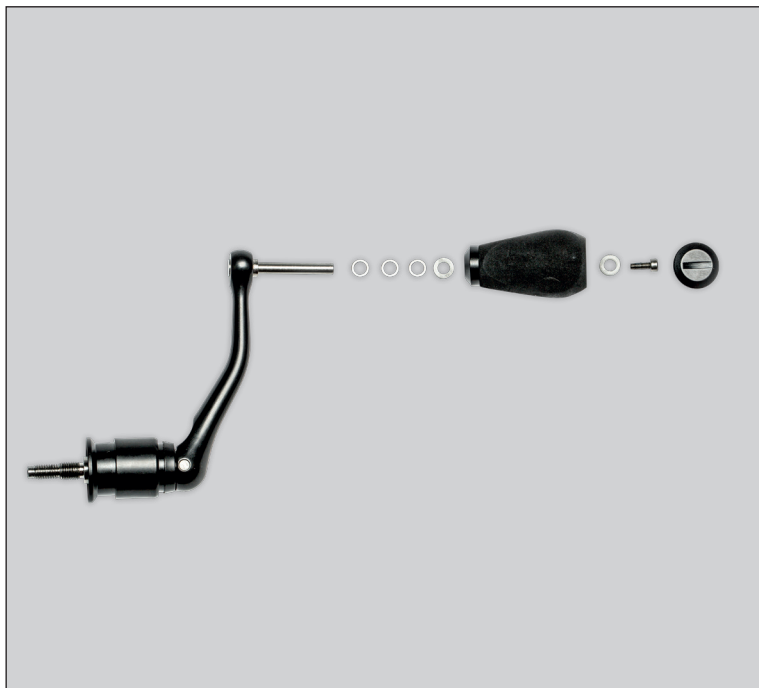


Drag washer	Ball bearing	Anti-reverse level spring
retainer	Line roller bushing	Anti-reverse level
Drag knob click plate	Line roller	Anti-reverse shaft
Drag washer	Line roller washer	Screw
Eared washer	Bail spring shaft	Body
key washer	Screw	Handle cap
Spool	Screw	Screw
Line clip spring	Rotor cover - A	Decorating ring
Line Clip	Bail spring	Oscillation gear
Click Plate	Balance plate	Ball bearing
Screw	Screw	Screw
Ball bearing	Screw	Slider assy
Washer	Rotor	Screw
Adjusting washer - A	Kick level	Ball bearing
Click leaf spring holder	Rotor cover - B	Drive gear assy
Click leaf spring	Adjusting washer - B	Ball bearing
Shaft drag adapter	Screw	Body cover
Main shaft	Roller cover	Screw
Pin	Ball bearing	Screw
Ball bearing cover	Roller room	Handle
Ball bearing	Roller	Handle knob washer
Bushing	Roller inner bushing	Handle knob bushing
Rotor nut	Pinion gear	Handle knob
Bail assy	Pinion gear bushing - A	Ball bearing
Screw	Pinion gear bushing - B	Screw
Bail arm	Spring	Handle knob cap
		Drag knob assy



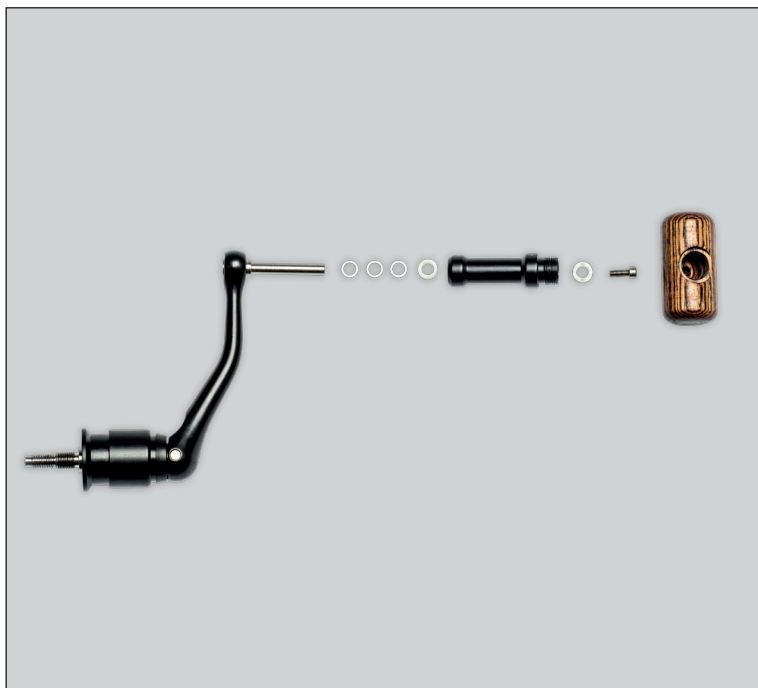


## COMPLETE ASSEMBLY FOR EVA HANDLE



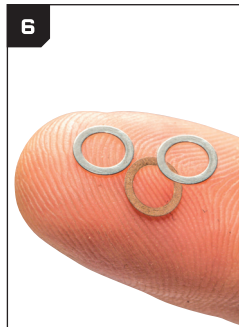
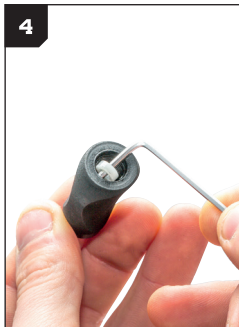
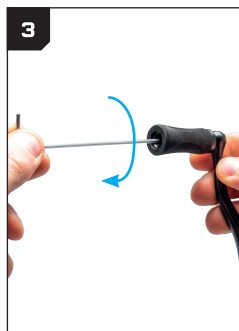
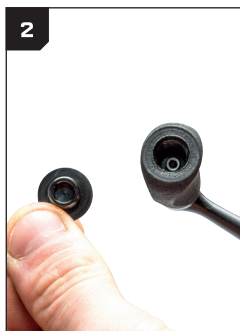
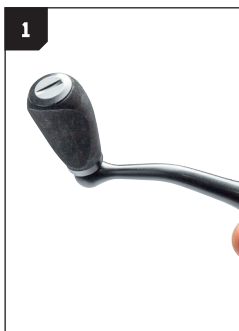


## COMPLETE ASSEMBLY FOR WOODEN HANDLE

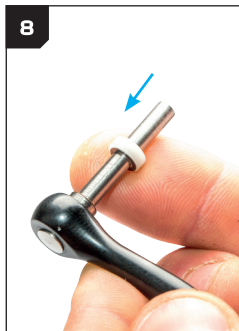




## HOW TO CHANGE YOUR HANDLE







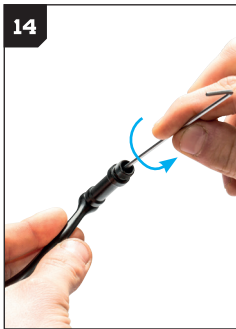


## HOW TO CHANGE YOUR HANDLE

13



14



15



16



17



## HOW TO SPOOL YOUR LINE





**Kevin Nash Group PLC**

Units 18-21 | Burnham Business Park | Essex | CM0 8TE

**T:** +44 (0) 1702 233 232 **E:** [info@nashtackle.co.uk](mailto:info@nashtackle.co.uk)

[www.nashtackle.com](http://www.nashtackle.com)

